



## TECHNICAL DATA

AIR  
400 l/m

VOLTAGE  
400 Volt 50 - 60 Hz

POWER  
4kw

SIZE  
4,00 X 2,40 X 1,70 mt

WEIGHT  
2550Kg

CHARGER SIZE  
1550 X 1500 mm

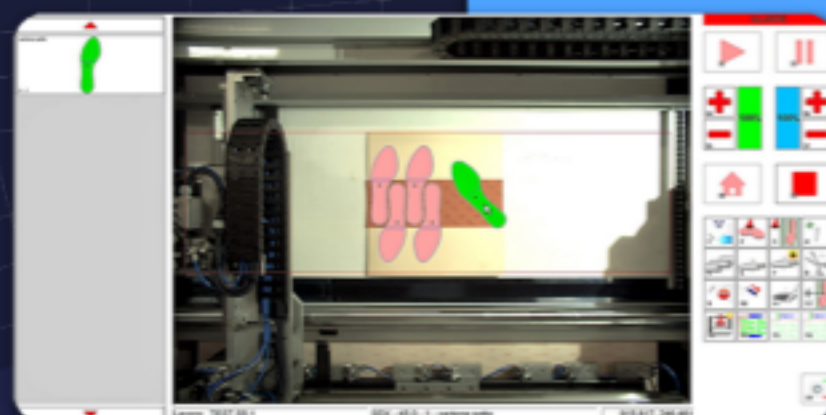
## PRODUCTION

counterforts and toe cups  
(multi - sheet)  
500 pairs/sheet hour

ONE SHEET  
1200 pairs/hour

**Saturno 5**, Talamonti's flagship, represents the maximum of innovation and automation; a fully automated CAD / CAM system for cutting sheets, strips and reels. In addition to preserving the characteristics of the Saturno 2 model, such as: the automatic charger that allows the loading of the material even during the processing phase, the cutting in multi-sheet mode (2,3,4, or more sheets), the manual unloading and the mechanical locking system of the material that replaces the expensive vacuum system, **Saturno 5**, is completed by an automatic unloading system that

divides the cut pieces according to the sole of the foot (left or right) and the size, depositing them on a conveyor belt. The two big news are: the nesting by hands using the new optical vision system directly installed on the machine and the automatic size printing by means a printer that is able to mark the cut pieces both vertically and horizontally way.



VERTICAL AND HORIZONTAL PRINTING



MANUAL PLACEMENT DIRECTLY  
ON THE MACHINE

CUTTING IN MULTI-SHEET MODE AND  
MANUAL UNLOADING OF THE CUT PIECES



The cutting heads allow the processing of any type of material up to 10 millimeters thick, including fibers, coupled, elastomers, thermoplastic, leather and regenerated leather. **Saturno 5**, is therefore designed to guarantee high productivity, a perfectly uniform and high quality processing on both sides of the cut pieces (thanks to the rigid cutting plane) and a high saving of material, labor force and energy consumption. Model design and selection of working programs can be performed by simple operations using our "leacad" software.