



## TECHNICAL DATA

AIR

100 l/m

VOLTAGE

400 Volt 50 - 60 Hz

POWER

5kw

SIZE

1,90 X 1,80 X 1,50 mt

WORKING AREA

1,50 X 1,20 mt

WEIGHT

750Kg

## PRODUCTION

200/400 pairs/hour

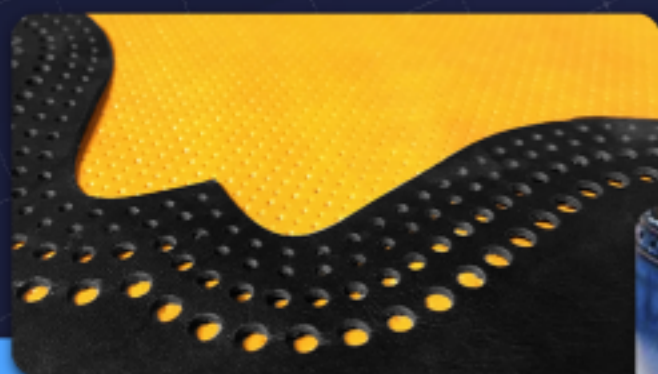


## FOOTWEAR COMPONENTS

**Mik Cut** is the number one to cut samples and small quantities. It's very suitable in cutting soles, insoles and counterforts up to 10 mm thick. Thanks to the high definition projector, the projection on the work table looks very clear and bright.



## MULTISECTORAL CUT



## HIGH QUALITY IN LEATHER CUT

**Mik Cut** can also be configured in an **avant** version, expressly designed for cutting and working leather. The cutting head, in Mik Cut Avant, is equipped with 7 tools: blade, marker, pen and 4 dies.

